

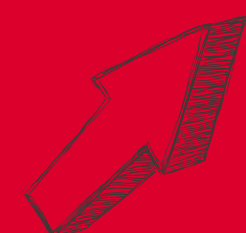
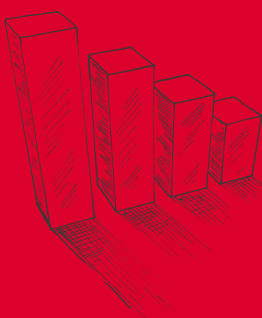


Interactive Displays in the Classroom

As classroom technology improves, interactive classroom displays are becoming the standard. The advantages of interactive classroom displays are present in practically every education-based scenario.

Combining the touch technology of a tablet with a whiteboard's educational functionality, interactive displays emphasize flexibility, collaboration, and creativity in the classroom. They also help simplify day-to-day tasks like collaboration, communication, and lesson planning, and the portability eases integration into schools with tight budgets.

A focused purpose when selecting the right display will guide the decision making process when it comes to choosing, implementing, and adopting this classroom technology.

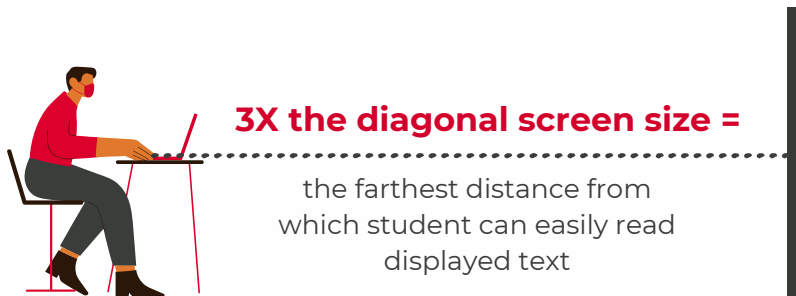


Features That Actually Matter

Features are key to distinguishing one interactive display from another. Check out some of the features that impact learning and interactive display integration in the classroom.

Visual Needs

Examine classroom sizes and seating arrangement possibilities to take into consideration student viewing needs. Watch out for image quality, screen glare, and screen size.



Touch Experience

If interactivity and collaboration are core to your educational goals, then testing the touch experience from both the student's and educator's point of view should be core to your purchasing decision.

Writing

Much of the work that happens on your interactive displays involves writing, so it's important to test for accuracy and legibility. Also, think about the need for simultaneous writing as some displays do not accommodate that feature.

Computing

A number of interactive displays include an embedded computer to eliminate the challenges involved with connecting to an external PC, as well as to help promote mobility. You'll find others with built in Wi-Fi and wireless screen sharing. We can help you determine the needs for your school and educators to help simplify the process.

Well suited for any type of classroom, lecture hall or distance-learning environment, the possible users for interactive displays are virtually endless. Reach out to us so we can help you select the right display for your classroom environments!

